

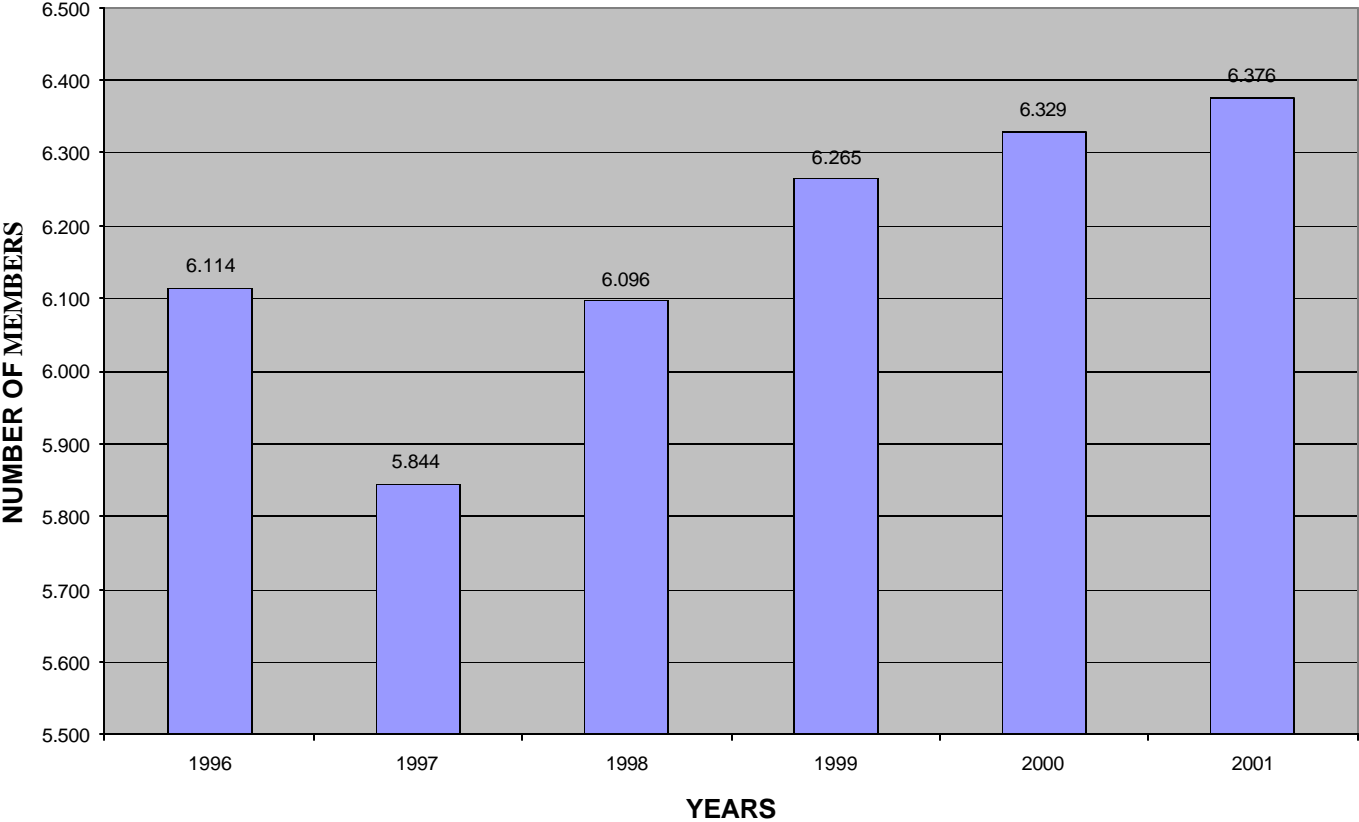
Aydan M.Erkmen

Lausanne 2002

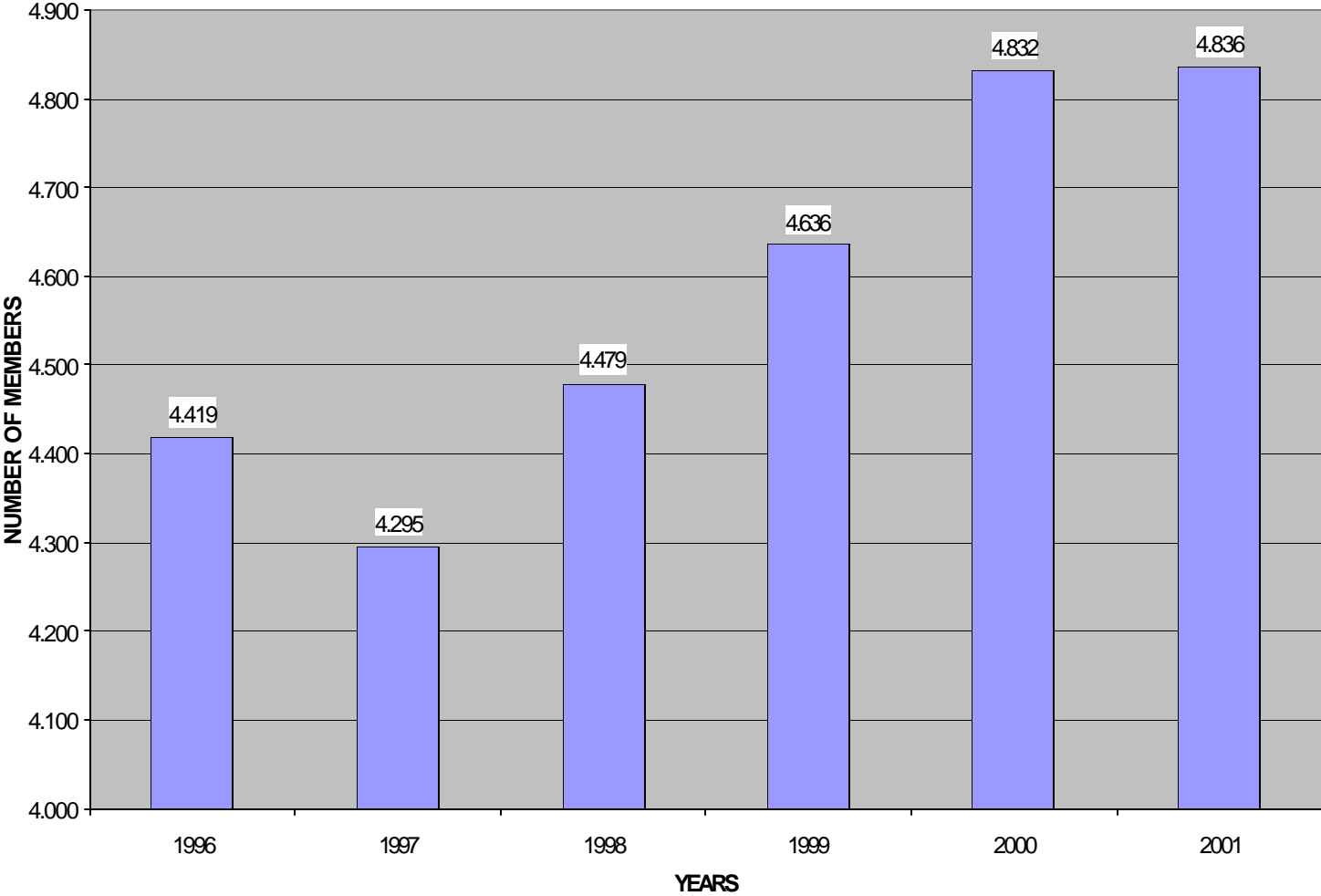


Membership Status and Activity Report

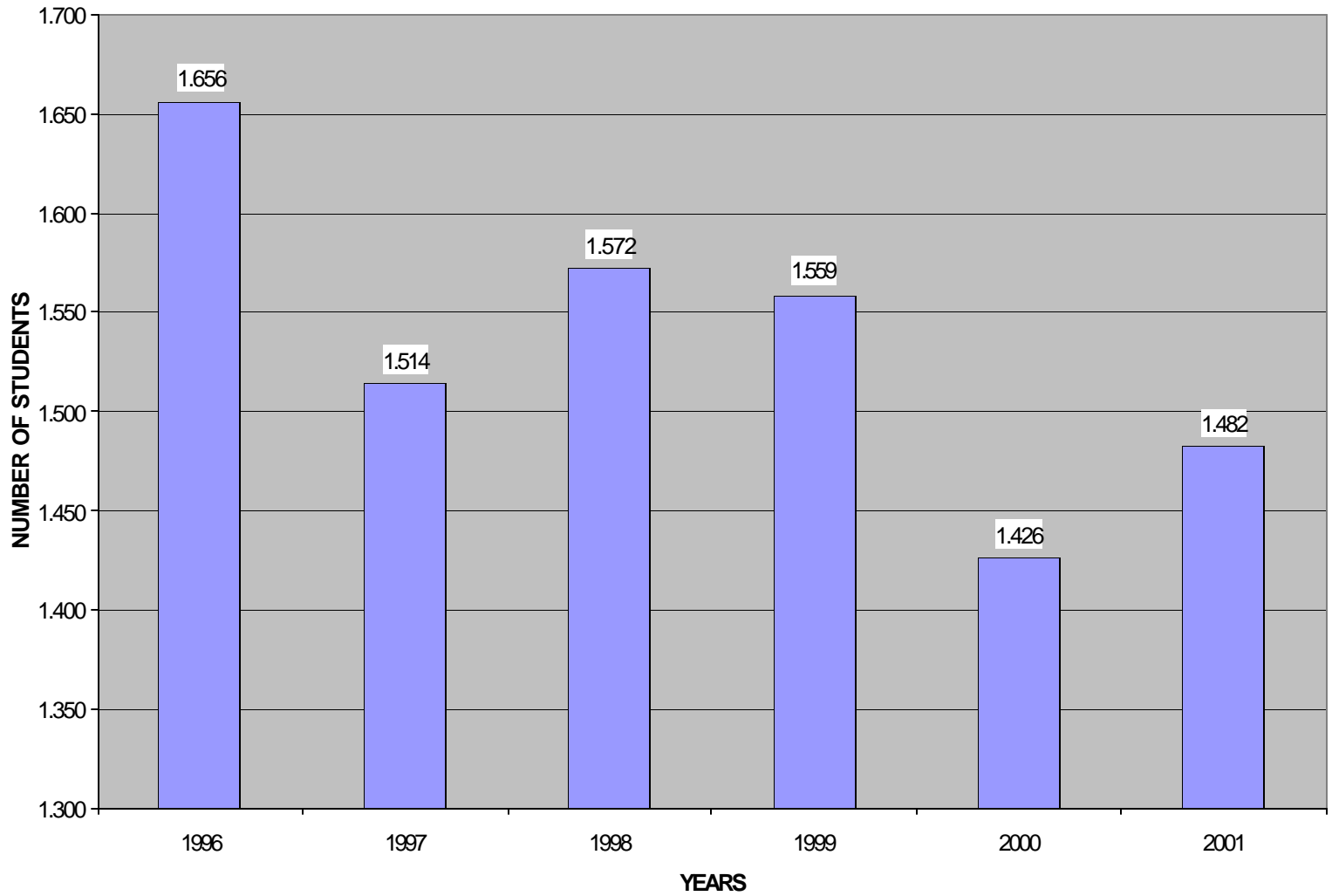
TOTAL MEMBERSHIP OVER YEARS



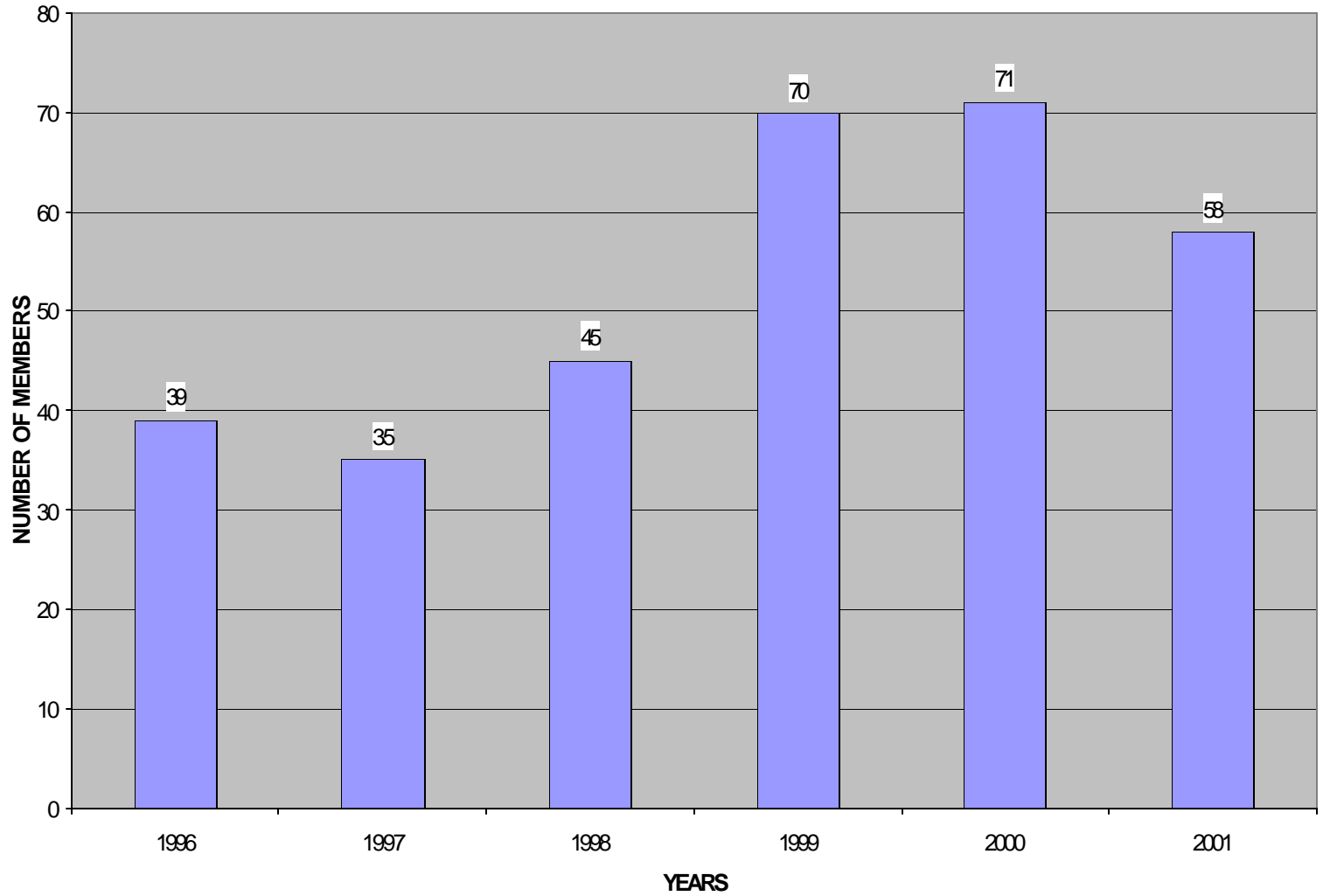
HIGHER GRADES MEMBERSHIP



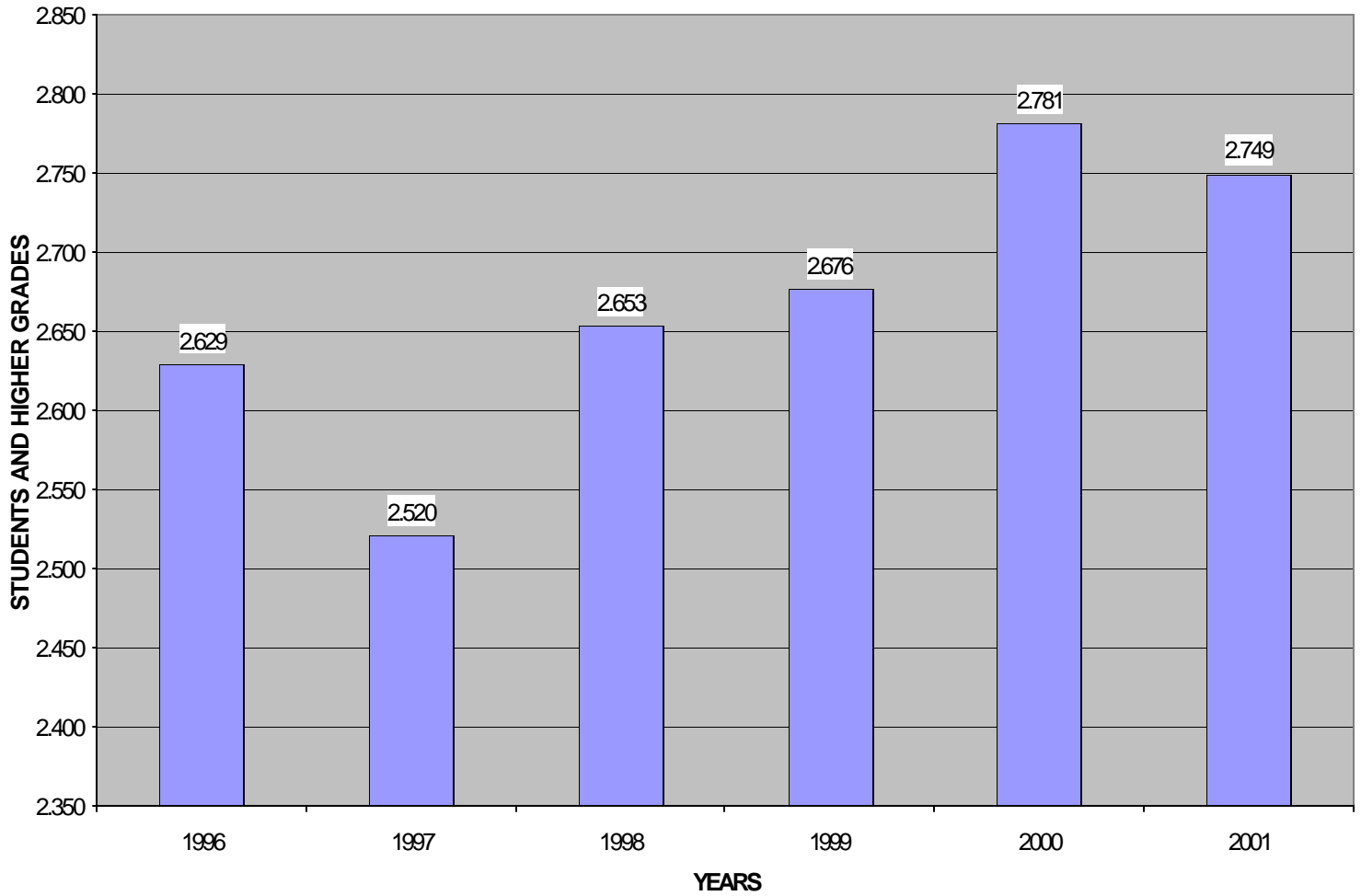
STUDENT MEMBERS



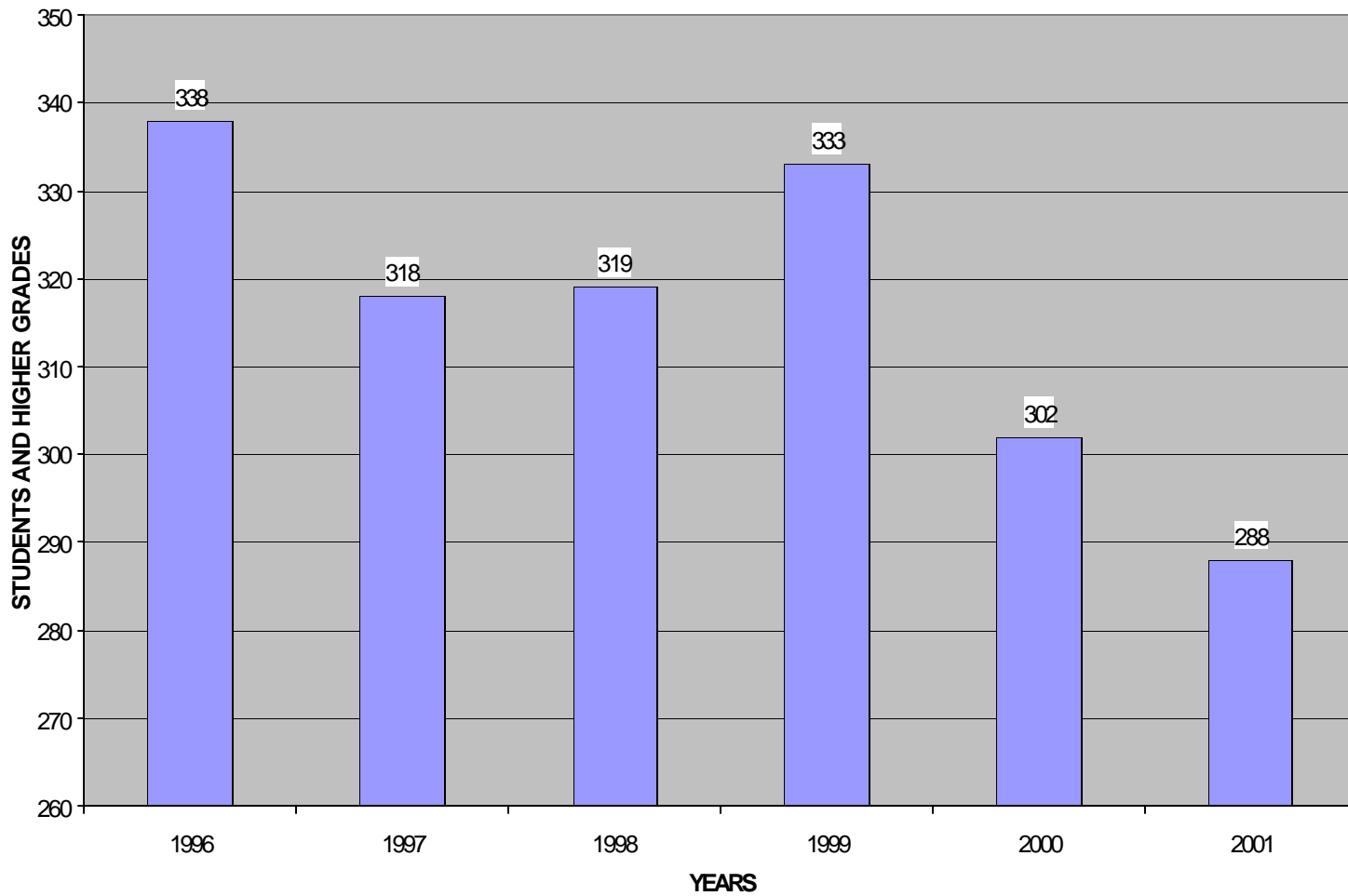
AFFILIATE MEMBERS



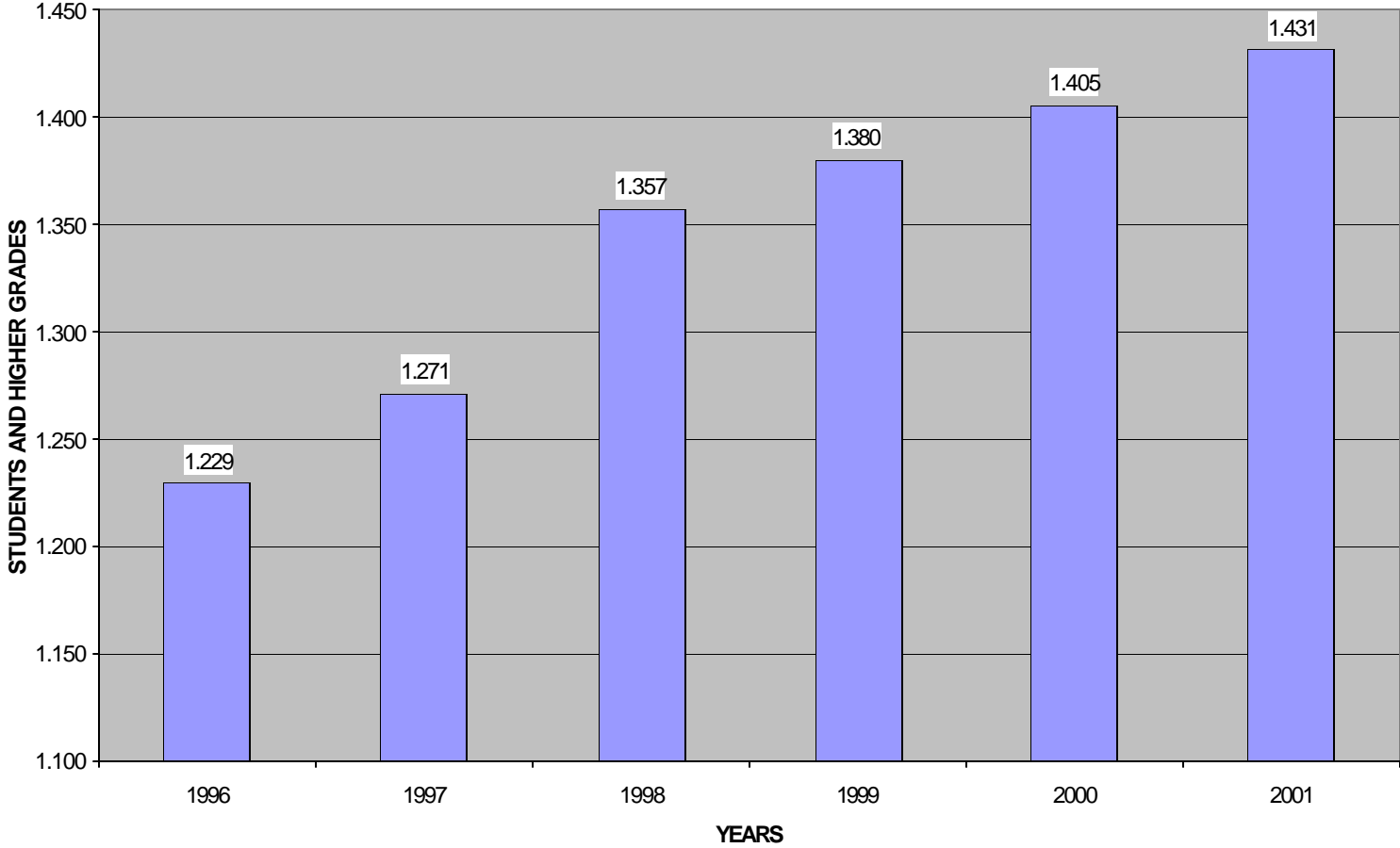
**GEOGRAPHIC DISTRIBUTION OF MEMBERS
(REGIONS 1-6)**



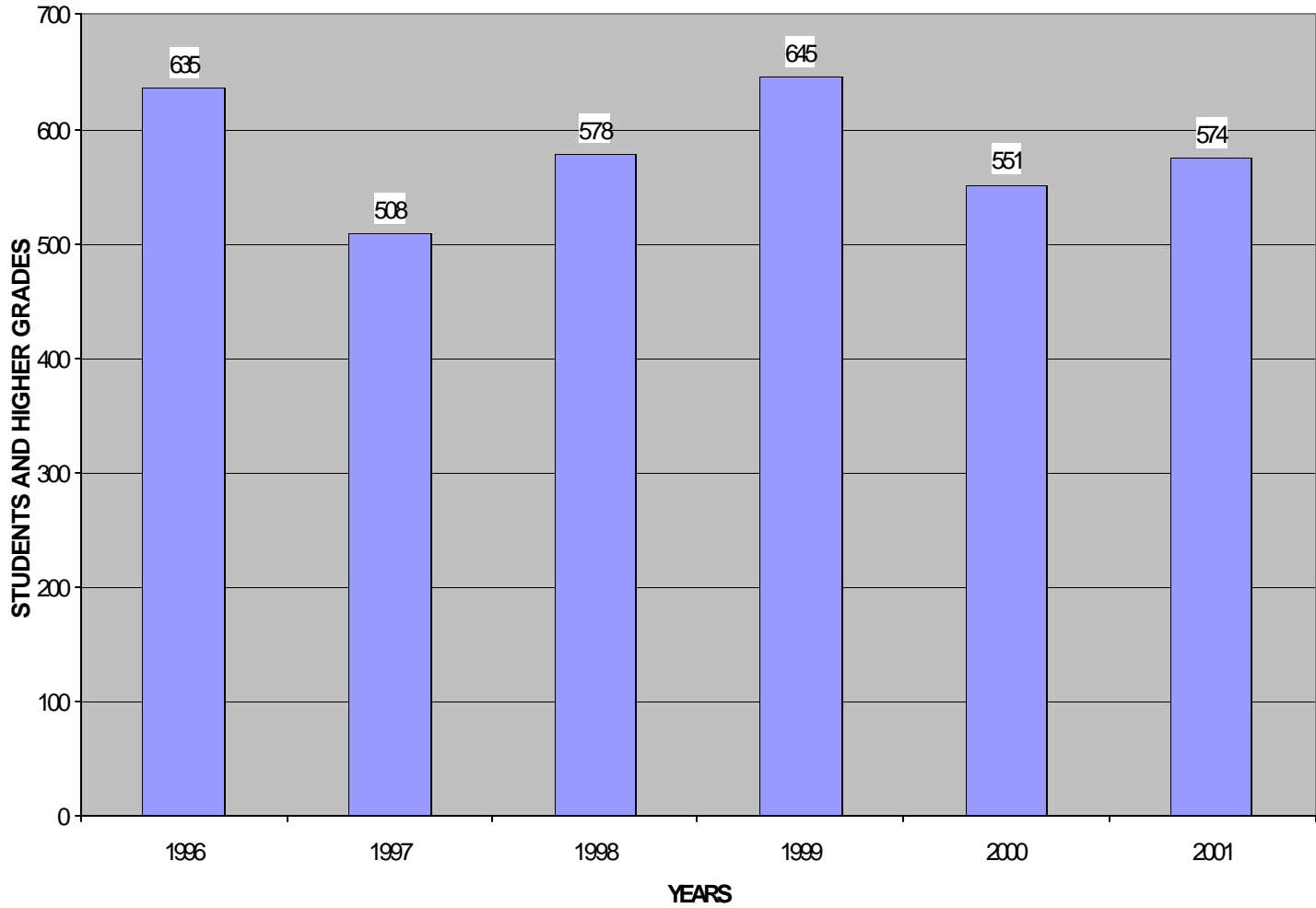
**GEOGRAPHIC DISTRIBUTION OF MEMBERS
(REGION 7)**



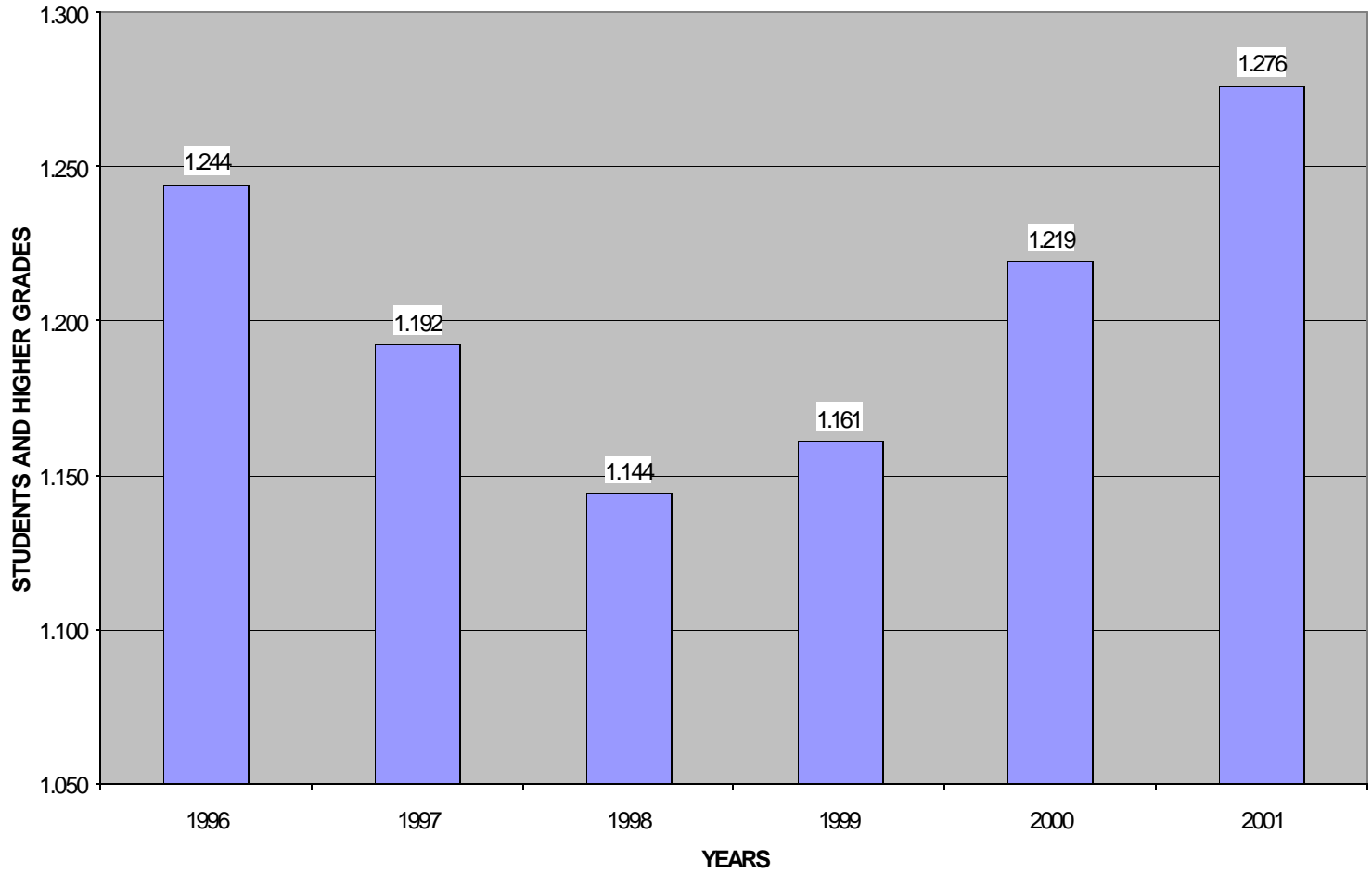
**GEOGRAPHIC DISTRIBUTION OF MEMBERS
(REGION 8)**



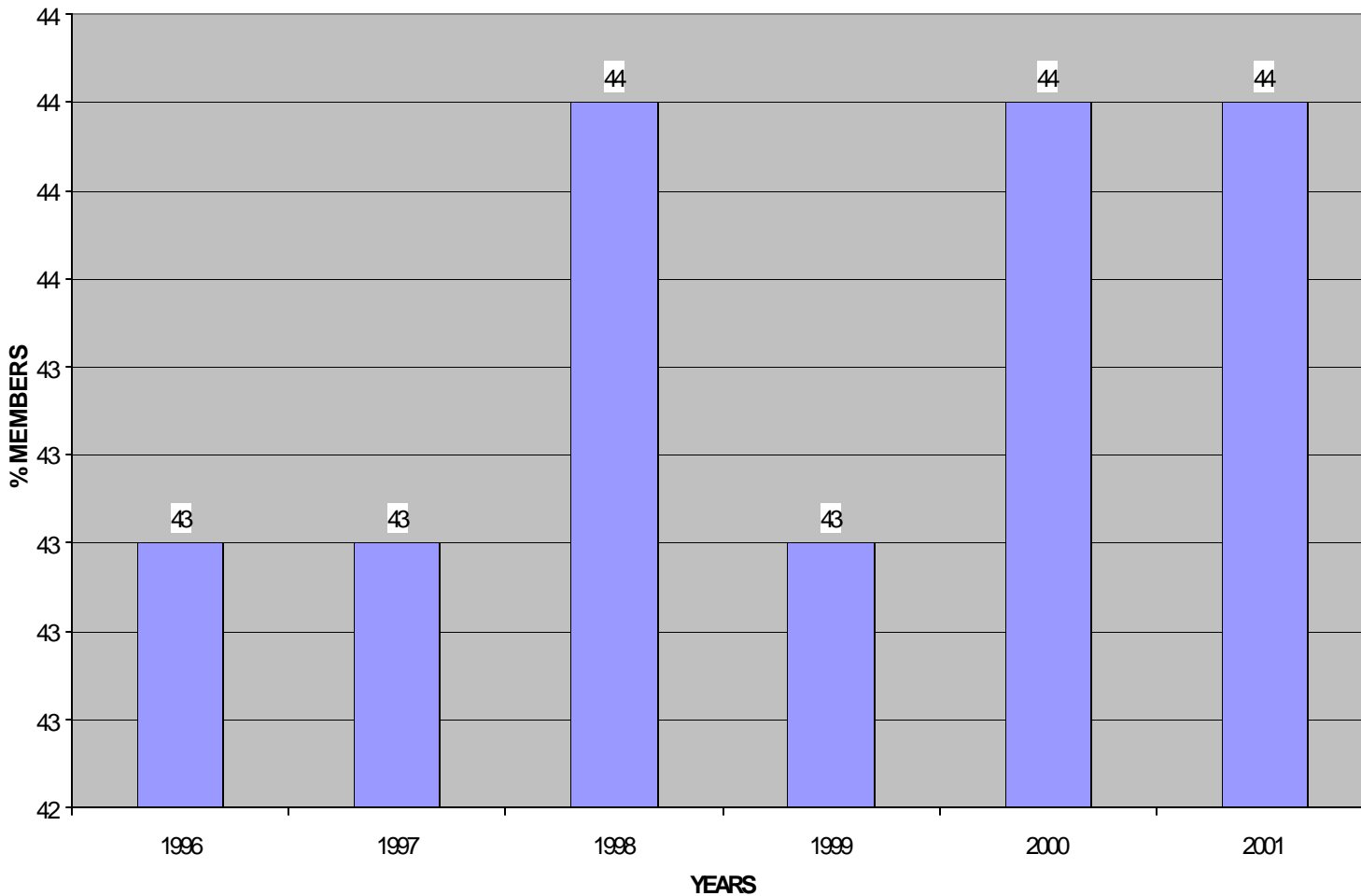
**GEOGRAPHIC DISTRIBUTION OF MEMBERS
(REGION 9)**



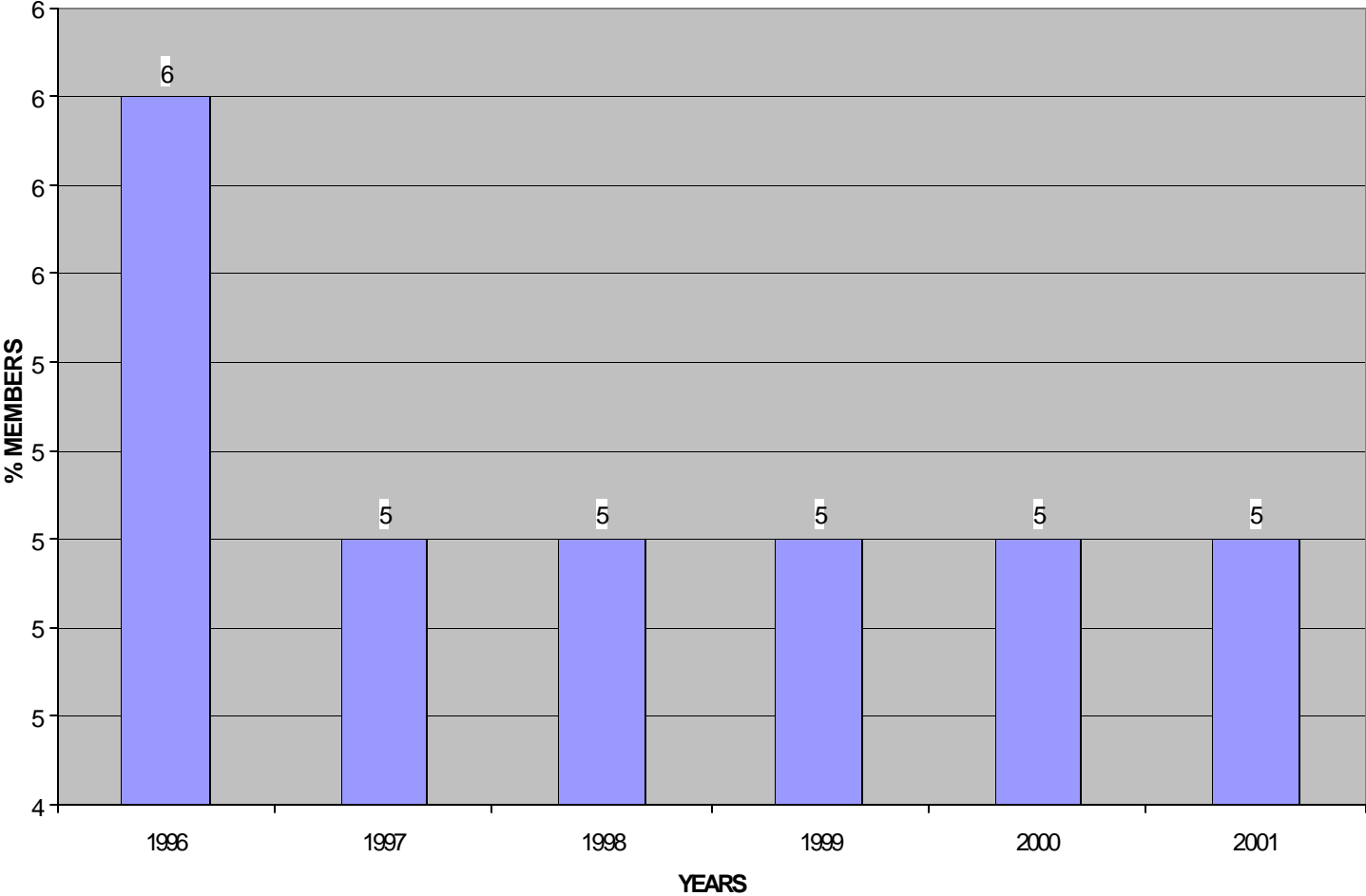
**GEOGRAPHIC DISTRIBUTION OF MEMBERS
(REGION 10)**



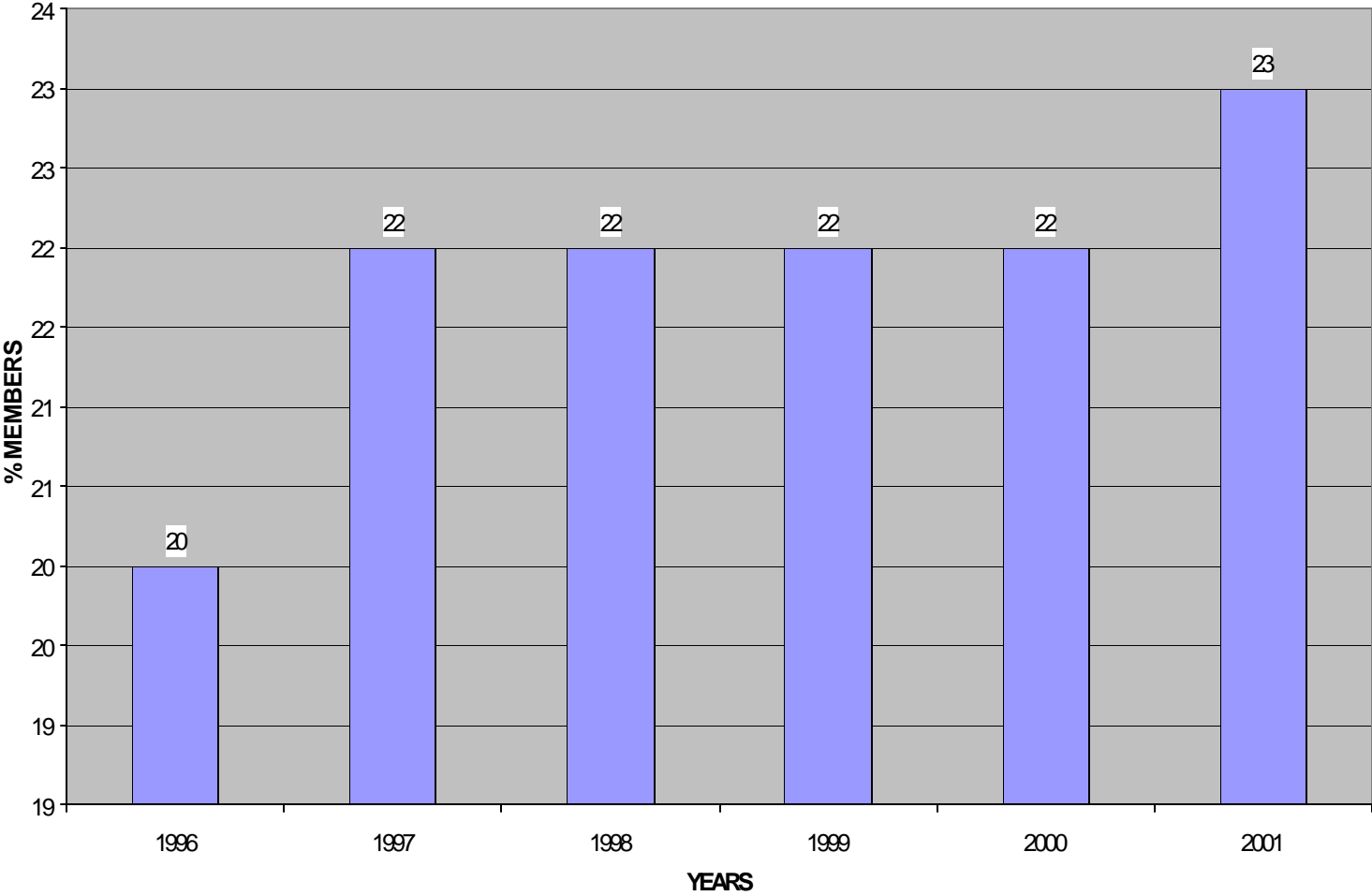
**% MEMBERSHIP DISTRIBUTION
(REGION 1-6)**



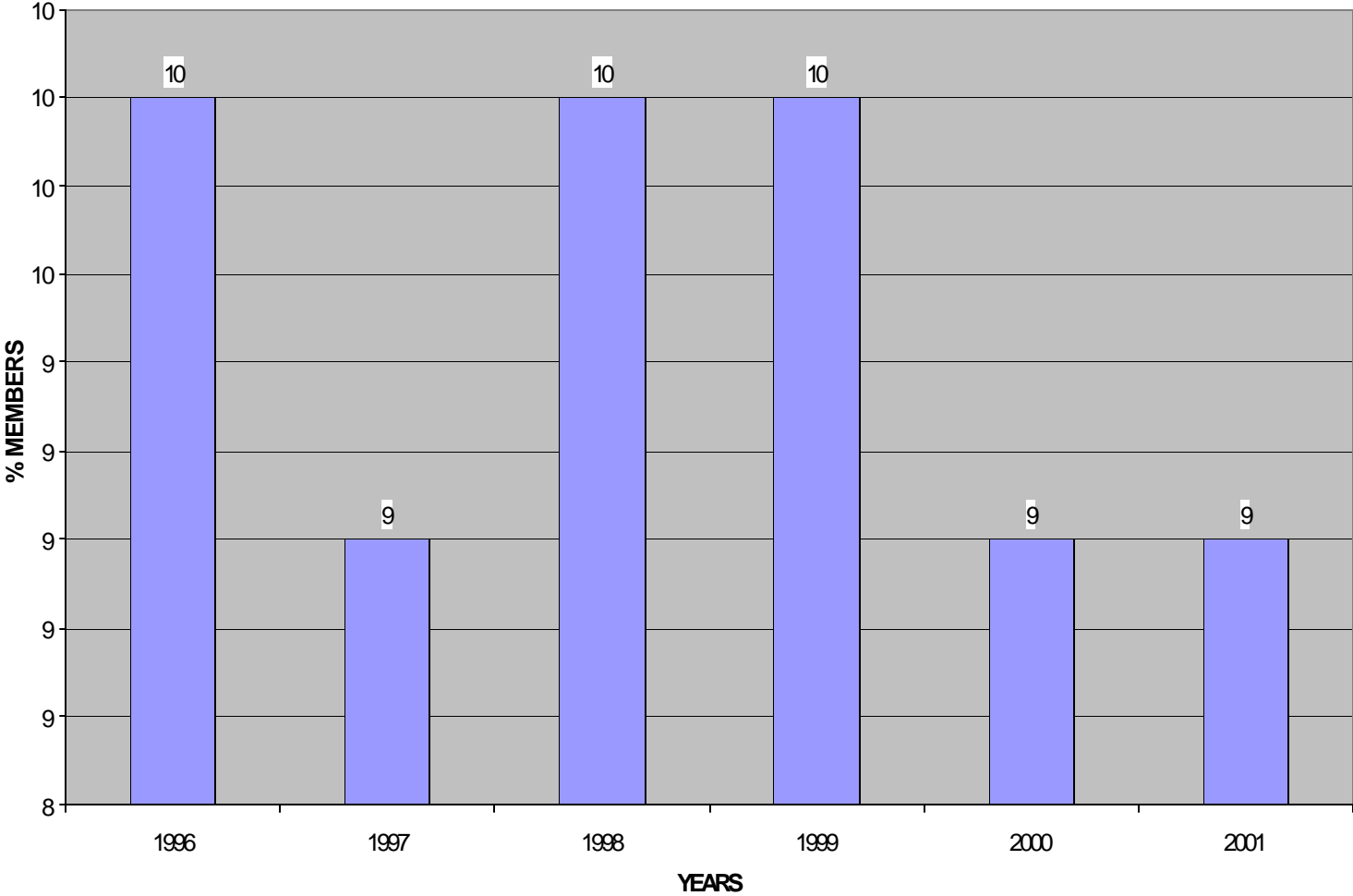
**% MEMBERSHIP DISTRIBUTION
(REGION 7)**



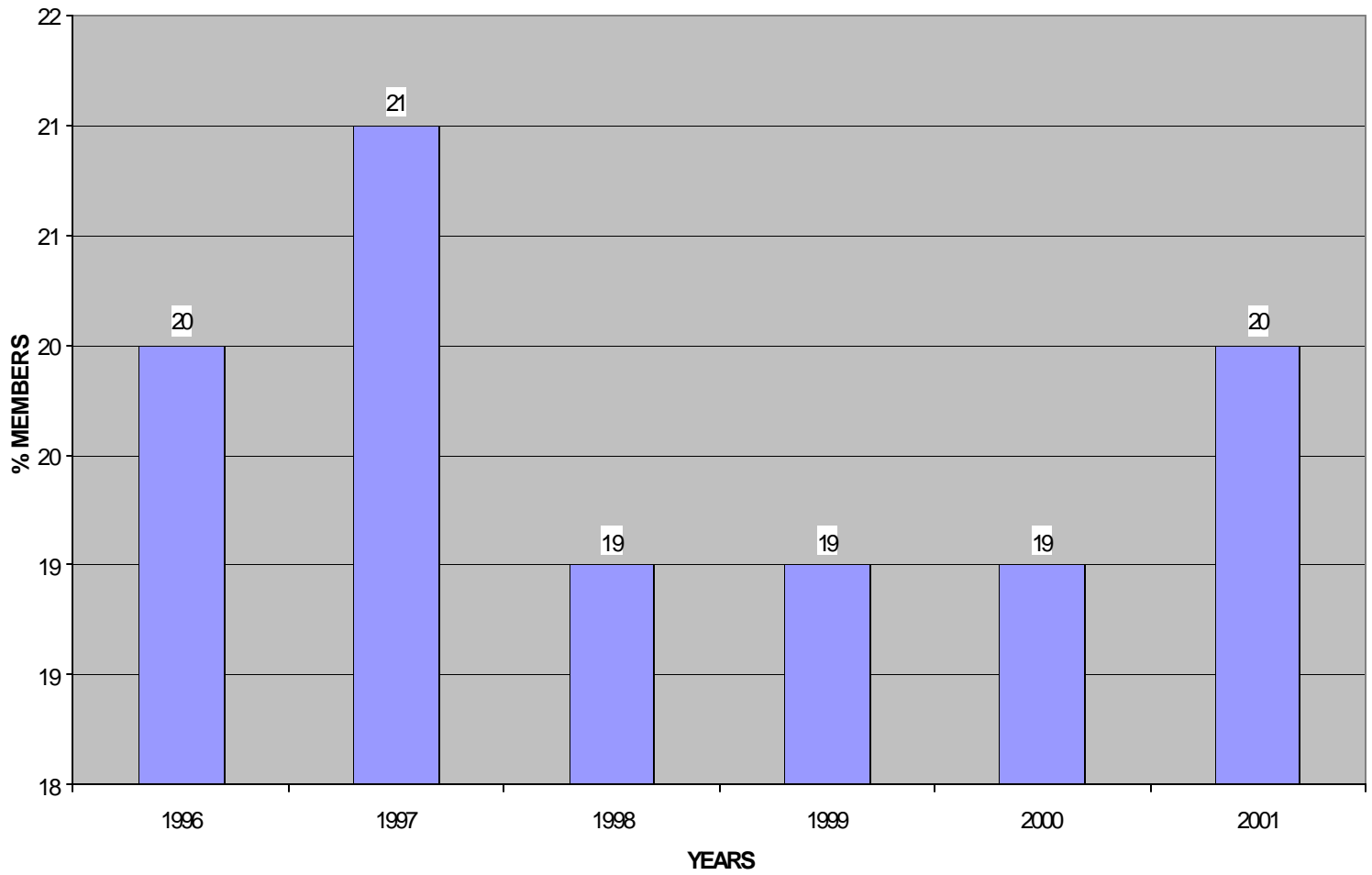
**% MEMBERSHIP DISTRIBUTION
(REGION 8)**



**% MEMBERSHIP DISTRIBUTION
(REGION - 9)**



**% MEMBERSHIP DISTRIBUTION
(REGION 10)**





Membership Dropouts

August-end statistics (2002)

- Total Arrears in number of memberships : 1986
- of this number:
 - 656 were R&A Society deletes
 - 1330 were IEEE terminated
- Current number of memberships: 23467



Activity Report:

Facts, current status
and Plans



FACTS

Surveys show that Members join IEEE for

- Technical Resources
 - Networking Opportunities
-
- RAS should also enhance these services in its own sectoral domain



Activities

- Establishment of a RAS Virtual Community:
 - multi-priority multi-user dynamic environment
 - facility for ADCOM members prior ADCOM meetings discussion (to be launched for test trials early January 2003)
 - facility for members interactions
 - facility for sister society member and RAS interactions: great for TC's
 - facility for non-members to join interactions but in a limited way (decrease limitations by becoming members!!)



RAS VC (continued)

- RAS VC final version by Feb 2003
- to be launched after budget approval
- IEEE Mindcruiser program for VC's is terminated. We have designed our own program.



New Tools for ICRA and IROS workshops

- For members in Industry (low retention rates!!!), Continuing Education Activities and Certification become predominantly important.
- ICRA and IROS workshops with certification: IEEE authorized IACET
- (www.ieee.org/eab/ceus/index.htm)
- to be implemented for ICRA and IROS in USA



Promoting Senior Memberships

- Senior members have shown a high retention rate of IEEE & Society memberships
- AIM: Detect potential SM candidates; reach them by e-mail, send promotion info, forms.
- Present Status: potential SM candidates mailing list is worked upon.
 - To be open to ADCOM addition and comments on RAS VC
Jan 2003



Promoting Chapters and Chapter Activities

- Best Chapter Awards: already in practice
 - Membership Development is an important added value in selection
 - RAS chapters have priority over joint chapters